


HARMONIC MINOR SCALES

Schroeder

Tuba



Staff 1: Tuba, C major, C4 to C5. Scale: C4, D4, E4, F4, G4, A4, B4, C5. Harmonic minor: C4, D4, E4, F4, G4, A4, Bb4, C5.

6



Staff 2: D major, D4 to D5. Scale: D4, E4, F#4, G4, A4, B4, C5, D5. Harmonic minor: D4, E4, F#4, G4, A4, Bb4, C5, D5.

11



Staff 3: E major, E4 to E5. Scale: E4, F#4, G4, A4, B4, C#5, D5, E5. Harmonic minor: E4, F#4, G4, A4, Bb4, C#5, D5, E5.

16



Staff 4: F# major, F#4 to F#5. Scale: F#4, G#4, A4, B4, C#5, D#5, E5, F#5. Harmonic minor: F#4, G#4, A4, Bb4, C#5, D#5, E5, F#5.

21



Staff 5: G major, G4 to G5. Scale: G4, A4, B4, C5, D5, E5, F#5, G5. Harmonic minor: G4, A4, B4, C5, D5, E5, Fb5, G5.

26



Staff 6: A major, A4 to A5. Scale: A4, B4, C5, D5, E5, F#5, G#5, A5. Harmonic minor: A4, B4, C5, D5, E5, Fb5, G#5, A5.

31



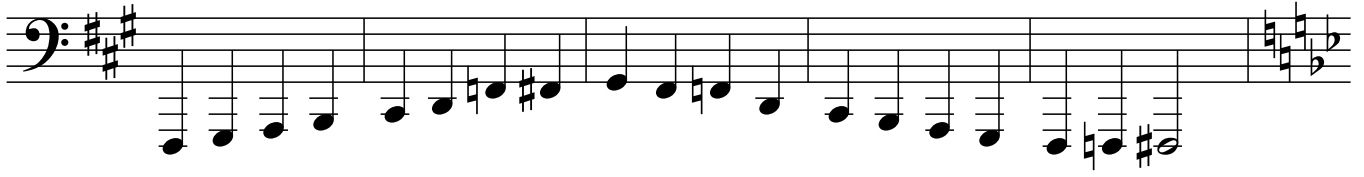
Staff 7: B major, B4 to B5. Scale: B4, C#5, D#5, E5, F#5, G#5, A5, B5. Harmonic minor: B4, C#5, D#5, E5, Fb5, G#5, A5, B5.

36



Staff 8: C# major, C#4 to C#5. Scale: C#4, D#4, E4, F#4, G#4, A#4, B4, C#5. Harmonic minor: C#4, D#4, E4, Fb4, G#4, A#4, B4, C#5.

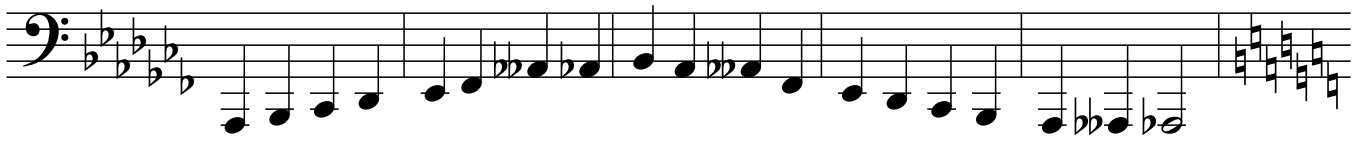
41



46



51



56

